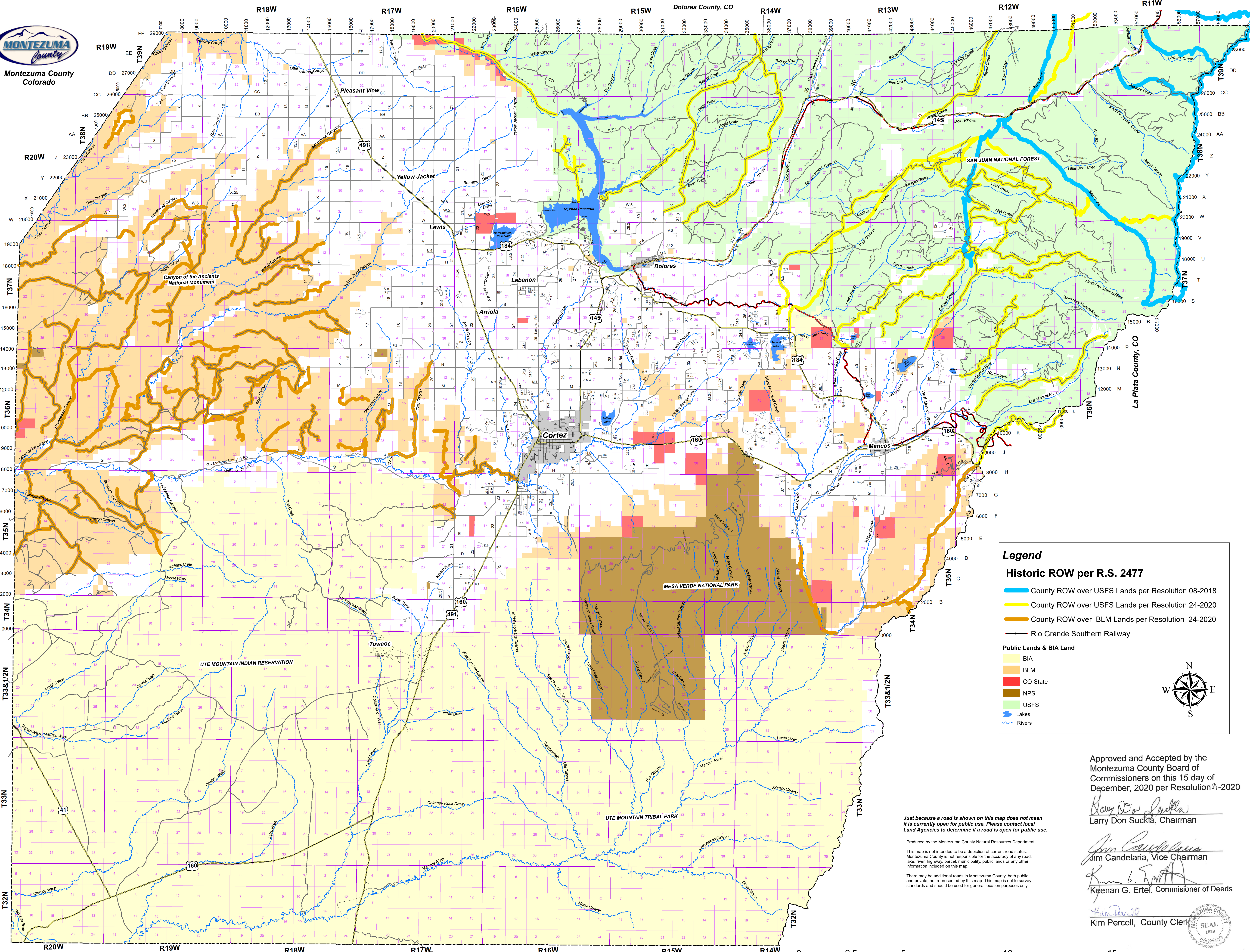


# Exhibit 1 - Montezuma County Rights-Of-Ways over Public Lands under R.S. 2477



Sap Juan County, UT

San Juan County, NM



**Legend**  
**Historic ROW per R.S. 2477**

- County ROW over USFS Lands per Resolution 08-2018
- County ROW over USFS Lands per Resolution 24-2020
- County ROW over BLM Lands per Resolution 24-2020
- Rio Grande Southern Railway

**Public Lands & BIA Land**

- BIA
- BLM
- CO State
- NPS
- USFS
- Lakes
- Rivers

Approved and Accepted by the  
Montezuma County Board of  
Commissioners on this 15 day of  
December, 2020 per Resolution 24-2020

*Larry Don Suckia*  
Larry Don Suckia, Chairman

*Jim Candelaria*  
Jim Candelaria, Vice Chairman

*Keenan G. Ertel*  
Keenan G. Ertel, Commissioner of Deeds

*Kim Percell*  
Kim Percell, County Clerk

Just because a road is shown on this map does not mean it is currently open for public use. Please contact local Land Agencies to determine if a road is open for public use.

Produced by the Montezuma County Natural Resources Department.  
This map is not intended to be a depiction of current road status. Montezuma County is not responsible for the accuracy of any road, lake, river, highway, parcel, municipality, public lands or any other information included on this map.

There may be additional roads in Montezuma County, both public and private, not represented by this map. This map is not to survey standards and should be used for general location purposes only.





**RESOLUTION 24 - 2020**

**SUPPLEMENT TO RESOLUTION 8-2018: COUNTY RIGHTS-OF-WAYS ESTABLISHED OVER PUBLIC LANDS UNDER R.S. 2477 AS PUBLIC RIGHTS-OF-WAYS AND PUBLIC HIGHWAYS**

**WHEREAS,** On June 18, 2018, Montezuma County passed Resolution 8-2018: *County Rights-of-Ways Established Over Public Lands Under R.S. 2477 As Public Rights-of-Ways and Public Highways*; and

**WHEREAS,** this resolution incorporates and supplements Resolution 8-2018; and

**WHEREAS,** The Montezuma County Board of Commissioners has considered and evaluated evidence and comments regarding these rights of ways and public highways; and

**WHEREAS,** the rights-of-way identified in these resolutions were established before the repeal of R.S. 2477 by the Federal Land Policy and Management Act (FLPMA), 43 U.S.C. §§1701-1784 on October 21, 1976 and are preserved in the same Act; and


**WHEREAS,** the Board of Commissioners hereby finds, determines and declares that adoption of this resolution is necessary for the preservation and protection of the public health, safety and welfare of Montezuma County, Colorado.

**NOW THEREFORE BE IT RESOLVED** by the Montezuma County Board of Commissioners that the County hereby asserts that in addition to Resolution 8-2018, the following rights-of-way and highways are public rights-of-ways and public highways under and pursuant to R.S. 2477 (43 U.S.C. 932) and 43 U.S.C. 1701, described in the attached Exhibits 1, 2 and 3.

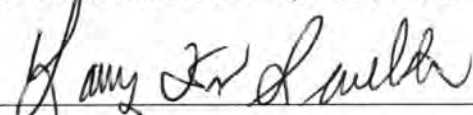
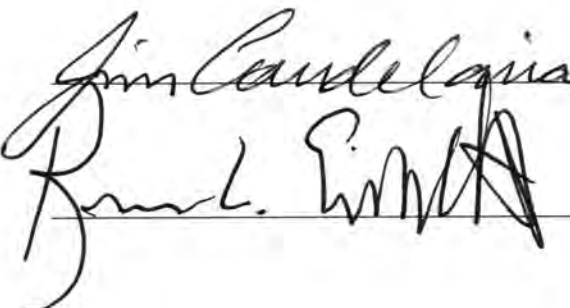
This resolution is hereby adopted and effective immediately.

Done this 15<sup>th</sup> day of December, 2020

BOARD OF COUNTY COMMISSIONERS,  
MONTEZUMA COUNTY, COLORADO

  
County Clerk and Recorder  
Montezuma County, Colorado



## **RESOLUTION 8 - 2018**

### **COUNTY RIGHTS-OF-WAYS ESTABLISHED OVER PUBLIC LANDS UNDER R.S. 2477 AS PUBLIC RIGHTS-OF-WAYS AND PUBLIC HIGHWAYS.**

**WHEREAS,** Montezuma County was established in 1889 and developed as a ranching, farming, logging and mining area, with extensive prospecting and exploration for, and production of, valuable minerals, forest products and agricultural products; and

**WHEREAS,** much of the mountainous area of Montezuma County became laced with wagon roads and horse trails and footpaths to facilitate such activities. Many of these roads, trails and paths were in general use by the public before and at the time of the establishment of Montezuma County, and many have been further developed into mining roads, logging roads and access roads, for the removal of minerals, forest products, and other uses; and

**WHEREAS,** these roads, trails and paths have continued in use by the general public for hunting, fishing, hiking, horseback riding, four wheeling, recreation, and other uses; and

**WHEREAS,** the terms "highways," "ways," "roads," or "rights-of-way" in this resolution have the same meaning, and include, but are not limited to, pedestrian trails, hiking trails, foot paths, horse paths, livestock trails, wagon roads, jeep trails, recreational roads, logging roads, homestead roads, mine-to-market roads, alleys, tunnels, bridges, dirt or gravel roads, paved roads, trails, streets, highways and all other ways and their attendant appurtenances and access for maintenance, reconstruction, and construction; and

**WHEREAS,** the United States Congress, for the purpose of promoting the settlement of the western United States by establishment of highways, granted a right-of-way for the construction of highways over public lands, not reserved for public uses, in Section 8 of the Mining Act of 1866, reenacted and recodified as Revised Statutes 2477 (R.S. 2477), 43 U.S.C. §932 (repealed Oct. 21, 1976); and

**WHEREAS,** the adoption of the statute constituted dedication of public highways by the United States government and, prior and subsequent to such statute, countless public ways were constructed by public use, and acceptance was accomplished by such public use, including a network of roads, trails and paths now located within and without of the National Forest and Bureau of Land Management lands in Montezuma County, Colorado; and

**WHEREAS,** the rights-of-way identified in this resolution were established before the repeal of R.S. 2477 by the Federal Land Policy and Management Act (FLPMA), 43 U.S.C. §§1701-1784, on October 21, 1976, and are thus preserved in the same Act; and



**WHEREAS**, the above-mentioned right to enter upon and construct rights-of-way across federal lands unreserved for public uses, which was accepted by grants whenever and wherever rights-of-way were established and were available for public use, remain available to this day as public highways for public use; and

**WHEREAS**, there now exists in Montezuma County an extensive network of roads, mining roads, logging roads, recreational roads, trails, horse trails, hiking trails, foot paths, and other public ways, all of which provide public access to, and throughout, the National Forest and Bureau of Land Management lands representing a substantial portion of land within Montezuma County; and

**WHEREAS**, the Board of County Commissioners of Montezuma County, Colorado, considers the existing system of roads, trails and paths as vital to the public welfare and the flow of commerce within this County, similar in some respect as the federal and state highway systems are vital to the welfare and commerce of the State of Colorado; and

**WHEREAS**, public access to routes of travel is essential to Montezuma County's transportation and public access systems and to the economic and social well-being, and the custom and culture, of the communities and citizens of Montezuma County; and

**WHEREAS**, identifying, asserting, and protecting these rights-of-way is necessary to protect Montezuma County's resources and to promote public health and safety, including but not limited to, search and rescue, fire protection, health and law enforcement, and other emergency services; and

**WHEREAS**, it is the policy of Montezuma County to assert that rights-of-ways established pursuant to the grant under R.S. 2477 be retained in perpetuity for the use and benefit of the public unless abandoned and vacated in accordance with applicable law; and

**WHEREAS**, this resolution recognizes rights-of-ways established over public lands under R.S. 2477, which were identified when the Board of County Commissioners directed Montezuma County staff to undertake an inventory of certain R.S. 2477 highway rights-of-way; and

**WHEREAS**, The Board of County Commissioners of Montezuma County has considered and evaluated the comments received and has made changes, when determined to be appropriate; and

**WHEREAS**, the Montezuma County Board of County Commissioners hereby finds, determines and declares that adoption of this resolution is necessary for the preservation and protection of the public health, safety and welfare of Montezuma County, Colorado.

**NOW THEREFORE, BE IT RESOLVED** by the Montezuma County Board of Commissioners that:



1. All public roads and public rights-of-way located within Montezuma County, Colorado that have not been lawfully vacated by the Board of County Commissioners, and which are listed in this resolution, are hereby asserted as public highways. "Public roads" and "public highways" as used herein include, but are not limited to: The highways, ways, roads and rights-of-way established under R.S. 2477 that are listed in this resolution.
2. The assertion of these R.S. 2477 rights-of-way and highways are currently the highest priority; however, Montezuma County reserves the right to assert highway rights-of-way in addition to this existing assertion, should the Board of County Commissioners deem it to be appropriate.
3. Montezuma County intends to work cooperatively with private landowners to provide acceptable public access while respecting private property interests.
4. Nothing in this resolution shall limit the authority of the Montezuma County Board of County Commissioners to hereafter modify, vacate, abandon, or expand the R.S. 2477 assertions contained herein.
5. Nothing in this resolution shall be interpreted or argued to imply that this listing is an exhaustive list of all R.S. 2477 rights-of-way and highways in Montezuma County or any portion thereof, nor that the listed rights-of-way and highways are not public rights-of-way or public highways under one or more other statutes or bases.
6. This resolution is in addition to, and is not intended to duplicate, any and all prior resolutions adopted by the Montezuma County Board of County Commissioners on this subject matter.

**BE IT FURTHER RESOLVED** that the Montezuma County Board of Commissioners hereby asserts, the following rights-of-way and highways to be public highways and public rights-of-way under and pursuant to R.S. 2477 (43 U.S.C. 932) and 43 U.S.C. 1701, further described in attached Exhibits 1, 2 and 3:


1. Morrison Trail/ Bear Creek Hill, FS 610
2. Bear Creek Trail, FS 607
3. Sharks Tooth Trail / Bear Creek, FS 620
4. Indian Trail Ridge/ Highline Loop/ Colorado Trail, 520
5. Pasture Gulch
6. Ryman Creek, FS 735
7. Priest Gulch Trail, FS 645
8. Calico South, FS 211
9. Burnett Creek Trail, FS 641
  - A. Burnett Creek Road, FSR 422
  - B. Burnett Creek Road A, FSR 422.A

- C. Burnett Creek Road A-1, FSR 422.A1  
10. Eagle Peak Trail, FS 629  
11. Horse Creek Trail, FS 626  
12. Horse Gulch Road, FSR 423  
13. Calico Basin Trail, FS 187  
14. Calico North Trail, FS 208  
15. Papoose Creek Trail  
16. Johnny Bull Trail, FS 438  
17. Dolores Norwood Road, Montezuma County Road 31 / USFS Road 526/ Dolores  
County Road 31/ San Miguel County Road S31 S/ FDR 610/ San Miguel County Road  
44Z S

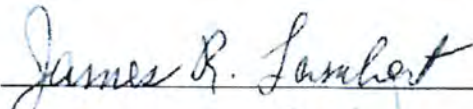


**BE IT RESOLVED** that this resolution is hereby adopted effective immediately.

Adopted this 18<sup>th</sup> day of June, 2018

BOARD OF COUNTY COMMISSIONERS,  
MONTEZUMA COUNTY, COLORADO

  
\_\_\_\_\_  
County Clerk and Recorder  
Montezuma County, Colorado



  
\_\_\_\_\_  
  
\_\_\_\_\_  
  
\_\_\_\_\_



## Exhibit 2); Rights of Way over USFS Public Lands under RS 2477

Route	Alias	Length_Mil	POB_Lat	POB_Long	End_Lat	End_Long
FS 504	Lone Dome Rd	8	37° 37' 54.451" N	108° 41' 38.101" W	37° 34' 35.288" N	108° 34' 36.786" W
FS 527	Boggy Draw Rd	12.1	37° 30' 6.743" N	108° 27' 56.689" W	37° 35' 31.792" N	108° 23' 4.655" W
FS 526	Dolores Norwood Rd	11.8	37° 30' 35.174" N	108° 28' 54.977" W	37° 37' 57.319" N	108° 24' 12.351" W
FS 566	Echo Basin Road	6.6	37° 23' 46.437" N	108° 13' 26.942" W	37° 26' 37.043" N	108° 9' 2.559" W
FS 316	Madden Peak Road	8.2	37° 20' 3.748" N	108° 12' 35.800" W	37° 22' 22.784" N	108° 8' 2.588" W
FS 559	Millwood Road	7	37° 26' 23.276" N	108° 18' 15.998" W	37° 29' 6.717" N	108° 12' 53.133" W
FS 331	Box Canyon Road	3.1	37° 25' 20.559" N	108° 11' 24.482" W	37° 27' 5.095" N	108° 10' 30.967" W
MCRD 36.5	MCRD 36.5	2.7	37° 26' 21.336" N	108° 22' 55.054" W	37° 28' 21.284" N	108° 22' 50.778" W
FS 350	Spruce Mill Road	6.4	37° 28' 56.460" N	108° 11' 42.409" W	37° 28' 32.425" N	108° 6' 21.851" W
FS 567	Red Arrow Road	9	37° 22' 19.546" N	108° 12' 37.516" W	37° 25' 27.140" N	108° 5' 47.446" W
MCRD 39	FS 559	10.2	37° 24' 55.042" N	108° 19' 17.397" W	37° 29' 6.717" N	108° 12' 53.133" W
MCRD 37	MCRD 37	1.3	37° 25' 33.618" N	108° 22' 23.360" W	37° 26' 37.064" N	108° 22' 6.916" W
FS 528	House Creek Rd	5.9	37° 31' 10.625" N	108° 32' 12.859" W	37° 33' 36.197" N	108° 27' 25.742" W
FS 561	West Mancos Road	13.4	37° 24' 53.727" N	108° 15' 15.743" W	37° 30' 30.797" N	108° 7' 26.898" W
No Route #	Lost Canyon Stock Drive	19.5	37° 26' 37.089" N	108° 22' 7.002" W	37° 30' 30.039" N	108° 7' 23.338" W
TR 608	Grindstone Trail	4	37° 30' 15.912" N	108° 2' 19.533" W	37° 30' 14.034" N	108° 5' 19.112" W
TR 618	Gold Run Trail	2.2	37° 30' 30.555" N	108° 7' 25.200" W	37° 31' 11.061" N	108° 6' 36.807" W
FS 556	Rock Springs Road	18.7	37° 28' 22.355" N	108° 22' 49.349" W	37° 31' 15.513" N	108° 9' 24.521" W
FS 375	Shortcut Road	2	37° 30' 18.799" N	108° 12' 53.591" W	37° 30' 7.179" N	108° 11' 2.995" W
FS 560	Lost Canyon Road	8.1	37° 28' 40.742" N	108° 12' 39.309" W	37° 31' 46.109" N	108° 13' 41.446" W
FS 500.d	Sage Hen	0.2	37° 33' 20.528" N	108° 34' 7.995" W	37° 33' 21.538" N	108° 33' 53.022" W
FS 500.b	Sage Hen	0.3	37° 33' 2.431" N	108° 34' 22.261" W	37° 33' 6.219" N	108° 34' 42.867" W
No Route #	Sage Hen	0.1	37° 31' 25.084" N	108° 33' 25.023" W	37° 31' 28.211" N	108° 33' 17.991" W
No Route #	Sage Hen	0.9	37° 32' 12.757" N	108° 33' 40.130" W	37° 32' 50.389" N	108° 33' 39.702" W
No Route #	Sagehen	0.5	37° 32' 21.112" N	108° 33' 37.419" W	37° 32' 28.827" N	108° 33' 7.757" W
FS 500.a	Sagehen	3.8	37° 30' 57.792" N	108° 33' 25.366" W	37° 33' 40.869" N	108° 34' 10.388" W
FS 385	Chicken Creek	7.6	37° 25' 24.065" N	108° 17' 31.130" W	37° 28' 51.320" N	108° 13' 14.589" W
FS 545	Taylor Mesa	7.1	37° 34' 40.600" N	108° 15' 9.763" W	37° 38' 6.487" N	108° 11' 33.718" W

Route	Alias	Length_Mil	POB_Lat	POB_Long	End_Lat	End_Long
FS 565	Transfer	6.4	37° 27' 58.356" N	108° 12' 39.159" W	37° 28' 48.703" N	108° 7' 38.510" W
MCRD 43	Taylor Mesa	0.7	37° 34' 12.278" N	108° 15' 41.192" W	37° 34' 40.600" N	108° 15' 9.763" W
TR 208	Lower Calico	8.1	37° 40' 9.920" N	108° 6' 23.324" W	37° 35' 11.782" N	108° 9' 50.147" W
561.E	Mancos-Bear Creek Wagon Road	8.3	37° 31' 21.018" N	108° 9' 2.806" W	37° 32' 43.496" N	108° 15' 13.500" W
No Route #	Wagon Road to Dolores	2.8	37° 33' 39.755" N	108° 12' 35.146" W	37° 32' 16.094" N	108° 14' 26.493" W

Sum Length\_Mil 207.1



## Exhibit 3); Rights of Way over CANM-BLM Public Lands under RS 2477

Route	Alias	Length_Mil	POB_Lat	POB_Long	End_Lat	End_Long
BLM 4526A	BLM 4526A	1.7	37° 22' 50.088" N	108° 52' 25.531" W	37° 23' 50.613" N	108° 52' 2.123" W
BLM 4526	BLM 4526	6	37° 21' 13.915" N	108° 55' 43.800" W	37° 23' 50.613" N	108° 52' 2.123" W
MCRD N	BLM 4526	4.7	37° 23' 50.613" N	108° 52' 2.123" W	37° 23' 48.470" N	108° 47' 42.537" W
BLM 4721a	BLM 4721a	3.8	37° 22' 58.490" N	109° 1' 4.445" W	37° 25' 23.735" N	109° 2' 3.691" W
BLM 4546a	W.2 Red Road BLM 4546a	6.8	37° 28' 8.557" N	109° 2' 38.793" W	37° 30' 13.063" N	108° 57' 30.782" W
BLM	Jeep Trail	0.8	37° 20' 42.438" N	108° 38' 45.017" W	37° 20' 11.830" N	108° 39' 15.841" W
BLM 4528	BLM 4528	3.2	37° 26' 37.767" N	108° 50' 20.124" W	37° 27' 10.862" N	108° 47' 32.075" W
BLM 4528	BLM 4528	5.7	37° 26' 37.064" N	108° 52' 19.177" W	37° 28' 3.459" N	108° 47' 31.548" W
BLM 4526f	BLM 4526f	4.1	37° 23' 50.613" N	108° 52' 2.123" W	37° 23' 0.369" N	108° 53' 23.767" W
Um253	Jeep Trail	1.3	37° 18' 12.878" N	108° 40' 54.070" W	37° 17' 46.308" N	108° 39' 49.547" W
BLM	Jeep Trail	1.9	37° 30' 3.163" N	108° 48' 4.773" W	37° 28' 46.949" N	108° 49' 0.715" W
BLM	Jeep Trail	11.7	37° 29' 21.956" N	108° 49' 35.443" W	37° 33' 52.655" N	108° 45' 54.229" W
BLM	Jeep Trail	1.7	37° 18' 52.347" N	108° 57' 24.445" W	37° 18' 1.809" N	108° 56' 14.796" W
BLM	Jeep Trail	1.1	37° 17' 56.168" N	109° 1' 24.827" W	37° 17' 16.456" N	109° 0' 39.855" W
BLM	Jeep Trail	0.8	37° 18' 27.094" N	109° 1' 14.249" W	37° 17' 56.168" N	109° 1' 24.827" W
BLM 4705	BLM 4705	1.6	37° 17' 52.767" N	108° 59' 52.945" W	37° 17' 27.750" N	108° 58' 28.366" W
BLM 4526d	BLM 4526d	4.1	37° 20' 28.097" N	108° 59' 33.558" W	37° 20' 49.389" N	108° 55' 57.077" W
BLM 4525	Jeep Trail	2.4	37° 19' 41.897" N	109° 2' 24.257" W	37° 20' 54.038" N	109° 0' 38.266" W
BLM	Jeep Trail	6.2	37° 20' 54.038" N	109° 0' 38.266" W	37° 23' 50.109" N	108° 57' 50.135" W
BLM	Jeep Trail	4.1	37° 25' 27.125" N	108° 45' 24.804" W	37° 25' 56.462" N	108° 48' 43.959" W
BLM 4526	BLM 4526	7.6	37° 19' 55.157" N	108° 56' 44.522" W	37° 24' 19.420" N	108° 54' 50.662" W
BLM 4725	BLM 4725	6.5	37° 21' 40.313" N	108° 52' 53.983" W	37° 24' 0.211" N	108° 49' 9.585" W
BLM	Jeep Trail	2.2	37° 27' 59.196" N	108° 49' 50.329" W	37° 28' 38.711" N	108° 47' 51.041" W
BLM 4531d	BLM 4531d	2.5	37° 30' 9.742" N	108° 54' 14.168" W	37° 28' 43.134" N	108° 55' 51.404" W
BLM 4522	Jeep Trail	4.1	37° 20' 27.692" N	108° 48' 29.853" W	37° 22' 25.199" N	108° 47' 15.741" W
BLM 4531e	BLM 4531e	0.4	37° 30' 9.742" N	108° 54' 14.168" W	37° 30' 13.187" N	108° 53' 48.675" W
BLM	Jeep Trail	1	37° 22' 12.504" N	108° 43' 28.625" W	37° 21' 24.012" N	108° 43' 41.990" W
BLM	Jeep Trail	1.9	37° 22' 12.504" N	108° 43' 28.625" W	37° 20' 57.535" N	108° 43' 52.085" W



Route	Alias	Length_Mil	POB_Lat	POB_Long	End_Lat	End_Long
BLM 4524	Jeep Trail	3.5	37° 17' 52.767" N	108° 59' 52.945" W	37° 18' 29.795" N	109° 1' 35.564" W
BLM	Jeep Trail	1.1	37° 16' 4.384" N	108° 59' 21.643" W	37° 15' 27.464" N	108° 58' 32.602" W
BLM	Jeep Trail	5.5	37° 16' 9.811" N	108° 55' 6.061" W	37° 19' 35.609" N	108° 55' 47.230" W
BLM	Jeep Trail	1.1	37° 16' 4.384" N	108° 59' 21.643" W	37° 15' 19.802" N	108° 59' 59.827" W
BLM	Jeep Trail	2.1	37° 25' 54.709" N	108° 47' 23.410" W	37° 25' 26.355" N	108° 45' 20.124" W
BLM	Jeep Trail	3.2	37° 20' 54.038" N	109° 0' 38.266" W	37° 23' 18.077" N	108° 59' 40.998" W
BLM 4706	BLM 4706	1.6	37° 18' 48.098" N	108° 59' 7.885" W	37° 19' 33.078" N	109° 0' 9.923" W
BLM 4532	BLM 4532	6.6	37° 24' 44.469" N	108° 59' 33.198" W	37° 27' 52.312" N	108° 55' 53.498" W
BLM	Jeep Trail	0.7	37° 17' 16.619" N	108° 55' 45.786" W	37° 17' 3.736" N	108° 55' 5.996" W
BLM	Jeep Trail	0.7	37° 22' 17.120" N	108° 52' 43.024" W	37° 21' 40.320" N	108° 52' 53.971" W
BLM	Jeep Trail	4.8	37° 21' 33.680" N	108° 55' 43.198" W	37° 23' 1.849" N	108° 55' 49.287" W
BLM 4724	Jeep Trail	4	37° 24' 8.966" N	108° 48' 5.839" W	37° 25' 18.107" N	108° 51' 15.615" W
BLM 4720	BLM 4720	4.6	37° 26' 43.934" N	108° 58' 23.153" W	37° 27' 8.648" N	109° 2' 38.902" W
BLM	Jeep Trail	1.3	37° 20' 59.012" N	108° 46' 58.998" W	37° 21' 45.130" N	108° 47' 17.259" W
BLM 4531	BLM 4531 (Painted Hand)	1.7	37° 26' 43.934" N	108° 58' 23.153" W	37° 28' 0.842" N	108° 58' 34.524" W
BLM	Jeep Trail	1.9	37° 19' 27.323" N	108° 40' 11.388" W	37° 19' 40.952" N	108° 38' 47.357" W
BLM 4526	BLM 4526	3.7	37° 21' 43.929" N	108° 54' 1.350" W	37° 22' 25.987" N	108° 52' 41.614" W
BLM 4726	BLM 4726	1.1	37° 23' 1.444" N	108° 48' 12.842" W	37° 23' 48.470" N	108° 47' 42.537" W
BLM	Jeep Trail	1	37° 17' 56.168" N	109° 1' 24.827" W	37° 17' 8.370" N	109° 1' 32.380" W
BLM	Jeep Trail	0.9	37° 17' 8.370" N	109° 1' 32.380" W	37° 17' 16.456" N	109° 0' 39.855" W
BLM	Jeep Trail	2.3	37° 17' 16.456" N	109° 0' 39.855" W	37° 16' 4.384" N	108° 59' 21.643" W
BLM	Jeep Trail	2.8	37° 22' 58.490" N	109° 1' 4.445" W	37° 21' 10.909" N	109° 1' 20.644" W
BLM	Jeep Trail	3.3	37° 23' 49.423" N	109° 2' 9.318" W	37° 21' 15.263" N	109° 2' 40.594" W
BLM 4526f	BLM 4526 f	4.6	37° 24' 4.286" N	108° 52' 36.258" W	37° 24' 55.303" N	108° 53' 36.870" W
BLM	Jeep Trail	0.9	37° 21' 51.575" N	108° 51' 54.050" W	37° 21' 45.073" N	108° 52' 36.418" W
BLM	Jeep Trail	1.7	37° 22' 51.460" N	108° 54' 5.644" W	37° 22' 56.492" N	108° 54' 28.232" W
BLM 4531f	BLM 4531f	1.2	37° 27' 52.312" N	108° 55' 53.498" W	37° 27' 55.795" N	108° 56' 53.098" W
BLM	Jeep Trail	0.8	37° 28' 51.510" N	108° 53' 54.845" W	37° 29' 24.987" N	108° 53' 47.149" W
BLM	Jeep Trail	0.3	37° 28' 55.592" N	108° 53' 56.239" W	37° 29' 9.073" N	108° 54' 5.218" W
MCRD w.6	Red Road W.6	4.1	37° 30' 38.478" N	108° 53' 24.434" W	37° 29' 33.023" N	108° 56' 7.461" W



Route	Alias	Length_Mil	POB_Lat	POB_Long	End_Lat	End_Long
BLM	Jeep Trail	1	37° 29' 21.968" N	108° 57' 30.813" W	37° 29' 26.271" N	108° 56' 39.823" W
MCRD CC.a	Road CC a	1.6	37° 34' 37.620" N	108° 56' 51.964" W	37° 33' 49.769" N	108° 57' 46.011" W
BLM	Jeep Trail	1.8	37° 27' 51.809" N	108° 55' 56.666" W	37° 26' 37.414" N	108° 56' 59.580" W
BLM	Jeep Trail	2.7	37° 23' 8.356" N	108° 45' 38.602" W	37° 22' 37.511" N	108° 44' 19.913" W
BLM	Jeep Trail	2.7	37° 20' 40.412" N	108° 45' 52.147" W	37° 20' 21.454" N	108° 44' 29.547" W
BLM	Jeep Trail	3.8	37° 19' 27.323" N	108° 40' 11.388" W	37° 21' 22.892" N	108° 40' 53.859" W
BLM	Jeep Trail	0.3	37° 18' 8.463" N	108° 39' 49.283" W	37° 18' 4.002" N	108° 40' 7.068" W
BLM	Jeep Trail	2.6	37° 20' 29.983" N	108° 49' 4.951" W	37° 21' 41.164" N	108° 48' 30.851" W
BLM	Jeep Trail	1.9	37° 24' 0.293" N	108° 47' 28.531" W	37° 23' 0.804" N	108° 48' 13.991" W
BLM	Jeep Trail	1	37° 23' 31.313" N	108° 48' 56.193" W	37° 22' 46.492" N	108° 48' 52.908" W
BLM	Jeep Trail	0.7	37° 24' 9.056" N	108° 48' 42.587" W	37° 24' 4.132" N	108° 49' 1.963" W
BLM	Jeep Trail	2	37° 24' 44.472" N	108° 59' 33.280" W	37° 23' 18.077" N	108° 59' 40.998" W
BLM	Jeep Trail	2	37° 23' 18.077" N	108° 59' 40.998" W	37° 23' 50.109" N	108° 57' 50.135" W
BLM	Jeep Trail	3.1	37° 23' 0.804" N	108° 48' 13.991" W	37° 23' 14.603" N	108° 50' 19.498" W
BLM	Jeep Trail	2.2	37° 29' 33.685" N	108° 51' 20.775" W	37° 29' 33.692" N	108° 51' 20.769" W
BLM	Jeep Trail	1.4	37° 28' 38.268" N	108° 47' 50.714" W	37° 29' 10.716" N	108° 46' 43.009" W
MCRD U & 14	Jeep Trail	0.8	37° 28' 16.263" N	108° 47' 21.760" W	37° 28' 16.294" N	108° 47' 21.750" W
BLM	Jeep Trail	1	37° 22' 12.504" N	108° 43' 28.625" W	37° 22' 42.086" N	108° 43' 3.782" W
BLM 4524	BLM 4524	1.3	37° 18' 34.133" N	108° 59' 32.139" W	37° 17' 52.767" N	108° 59' 52.945" W
BLM 4702	BLM 4702	2	37° 16' 44.893" N	109° 2' 12.922" W	37° 16' 44.920" N	109° 2' 12.682" W
BLM	Jeep Trail	2.7	37° 33' 4.572" N	108° 58' 11.880" W	37° 34' 24.088" N	108° 56' 49.949" W
MCRD 9.2	Red Road 9.2	7.3	37° 25' 0.718" N	108° 54' 49.847" W	37° 30' 25.433" N	108° 52' 57.425" W
BLM	Jeep Trail	2.7	37° 21' 51.501" N	108° 51' 44.255" W	37° 20' 56.494" N	108° 50' 54.742" W
BLM	Jeep Trail	1.3	37° 18' 43.071" N	108° 39' 33.729" W	37° 19' 27.323" N	108° 40' 11.388" W
BLM	Jeep Trail	1.1	37° 23' 49.195" N	108° 55' 9.799" W	37° 24' 19.420" N	108° 54' 50.662" W
BLM	Jeep Trail	0.6	37° 27' 15.486" N	108° 53' 32.868" W	37° 27' 13.786" N	108° 54' 12.237" W
BLM	Jeep Trail	0.7	37° 27' 15.486" N	108° 53' 32.868" W	37° 27' 36.686" N	108° 54' 3.657" W
BLM	Jeep Trail	0.6	37° 20' 8.023" N	108° 38' 47.347" W	37° 19' 40.952" N	108° 38' 47.357" W
BLM	Jeep Trail	0.5	37° 21' 10.004" N	108° 38' 45.344" W	37° 20' 42.438" N	108° 38' 45.017" W
BLM 4525	BLM 4525	5.7	37° 24' 0.586" N	109° 0' 30.929" W	37° 25' 15.461" N	108° 59' 54.101" W
BLM 4531f	BLM 4531f	1.7	37° 27' 5.101" N	108° 57' 45.866" W	37° 26' 43.934" N	108° 58' 23.153" W



Route	Alias	Length_Mil	POB_Lat	POB_Long	End_Lat	End_Long
BLM	Jeep Trail	0.9	37° 25' 48.235" N	108° 55' 36.212" W	37° 25' 54.808" N	108° 54' 40.771" W
BLM	Jeep Trail	0.9	37° 26' 19.247" N	108° 55' 37.137" W	37° 26' 16.946" N	108° 54' 39.114" W
BLM	Jeep Trail	1	37° 28' 2.737" N	108° 53' 33.987" W	37° 27' 15.486" N	108° 53' 32.868" W
BLM	Jeep Trail	3.6	37° 28' 6.956" N	108° 53' 36.468" W	37° 28' 6.956" N	108° 53' 36.468" W
BLM	Jeep Trail	0.3	37° 23' 50.796" N	108° 57' 55.712" W	37° 23' 58.374" N	108° 57' 36.976" W
BLM	Jeep Trail	1.4	37° 27' 33.500" N	108° 46' 26.085" W	37° 27' 11.271" N	108° 47' 31.920" W
BLM 4524	BLM 4524	1.4	37° 17' 58.057" N	108° 58' 5.380" W	37° 18' 48.098" N	108° 59' 7.885" W
BLM 4524	BLM 4524	2.2	37° 17' 28.146" N	108° 55' 55.862" W	37° 18' 1.400" N	108° 57' 52.928" W
BLM	Jeep Trail	2	37° 28' 55.616" N	108° 49' 47.676" W	37° 29' 48.672" N	108° 49' 58.857" W
J	Trail Canyon Rd	1.3	37° 20' 23.714" N	108° 43' 12.606" W	37° 20' 25.683" N	108° 41' 55.219" W
Road 46	East Canyon	10.2	37° 14' 7.995" N	108° 18' 23.700" W	37° 20' 3.550" N	108° 12' 32.106" W
19	Trail Canyon Rd	2.7	37° 22' 15.264" N	108° 41' 59.149" W	37° 24' 16.673" N	108° 41' 1.941" W
BLM	Jeep Trail	3.8	37° 19' 40.952" N	108° 38' 47.357" W	37° 19' 22.765" N	108° 36' 31.186" W
19	Trail Canyon Rd	2.3	37° 20' 25.683" N	108° 41' 55.219" W	37° 22' 15.264" N	108° 41' 59.149" W
Road 38	Mancos River Road	5.6	37° 16' 39.103" N	108° 21' 46.946" W	37° 13' 1.454" N	108° 19' 52.233" W
	Farmington Wagon Road	1.7	37° 14' 24.743" N	108° 16' 45.125" W	37° 13' 54.161" N	108° 16' 6.135" W

Sum Length\_Mil 275.1