

The Dolores Ranger District is planning a couple prescribed burns this fall potentially looking to start the week of September 22nd **(this is all pending favorable conditions and smoke limitations).**

Fall broadcast plans:

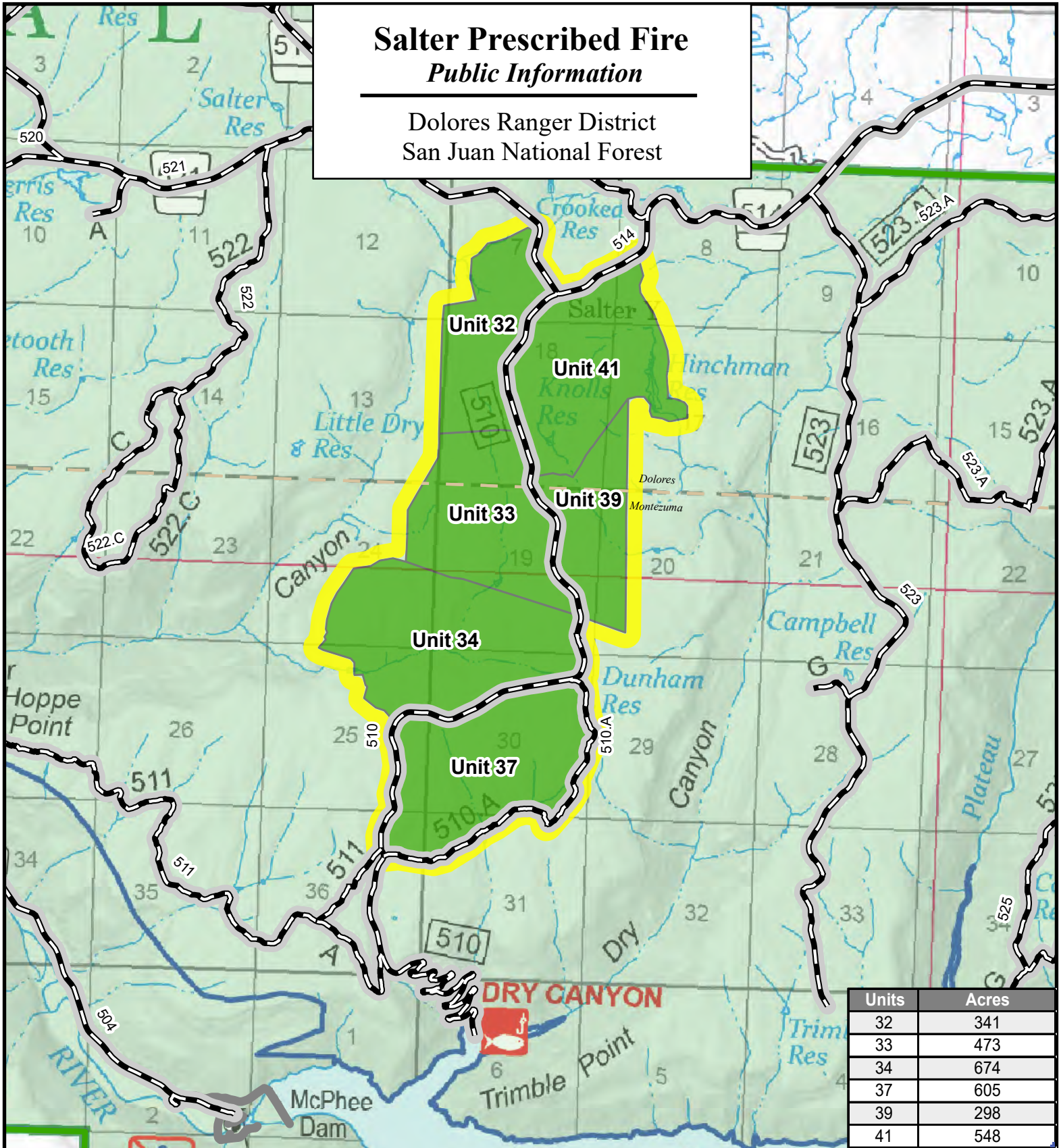
- Salter/Carlyle: 1,660 acres located 15 miles east of Cahone, near Salter Y along (NFSR) 510 just south of (NFRS) 514 - Salter Units 32, 33, 39, 41
- Boggy Draw: 1,577 acres located 5 miles northeast of Dolores, along (NFSR) 527 near the junction of (NFRS) 257a - Boggy Draw Units 25A, 25B, 25C

Primary fuels consist of ponderosa pine and Gambel oak understory and will be implemented utilizing both **UAS and hand ignitions.**

Salter Prescribed Fire

Public Information

Dolores Ranger District
San Juan National Forest



Units	Acres
32	341
33	473
34	674
37	605
39	298
41	548

- FS Roads per MVUM**
- Roads Open to All Vehicles, Yearlong
 - Roads Open to All Vehicles, Seasonal
 - Roads Open to Highway Legal Vehicles Only, Yearlong
 - Roads Open to Highway Legal Vehicles Only, Seasonal
 - Special Designation, Yearlong
 - Special Designation, Seasonal
 - State or US Highway
- Legend:**
- Salter
 - County
 - Ranger District
 - Jurisdiction
 - USFS
 - Private

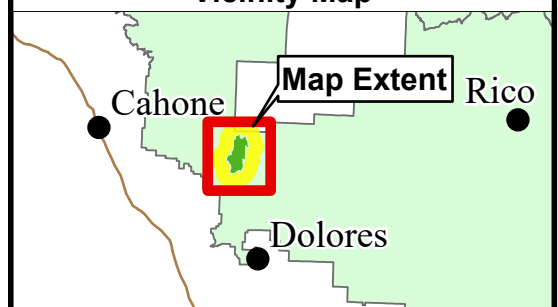


Created: 1/19/2024
Created By: NMW

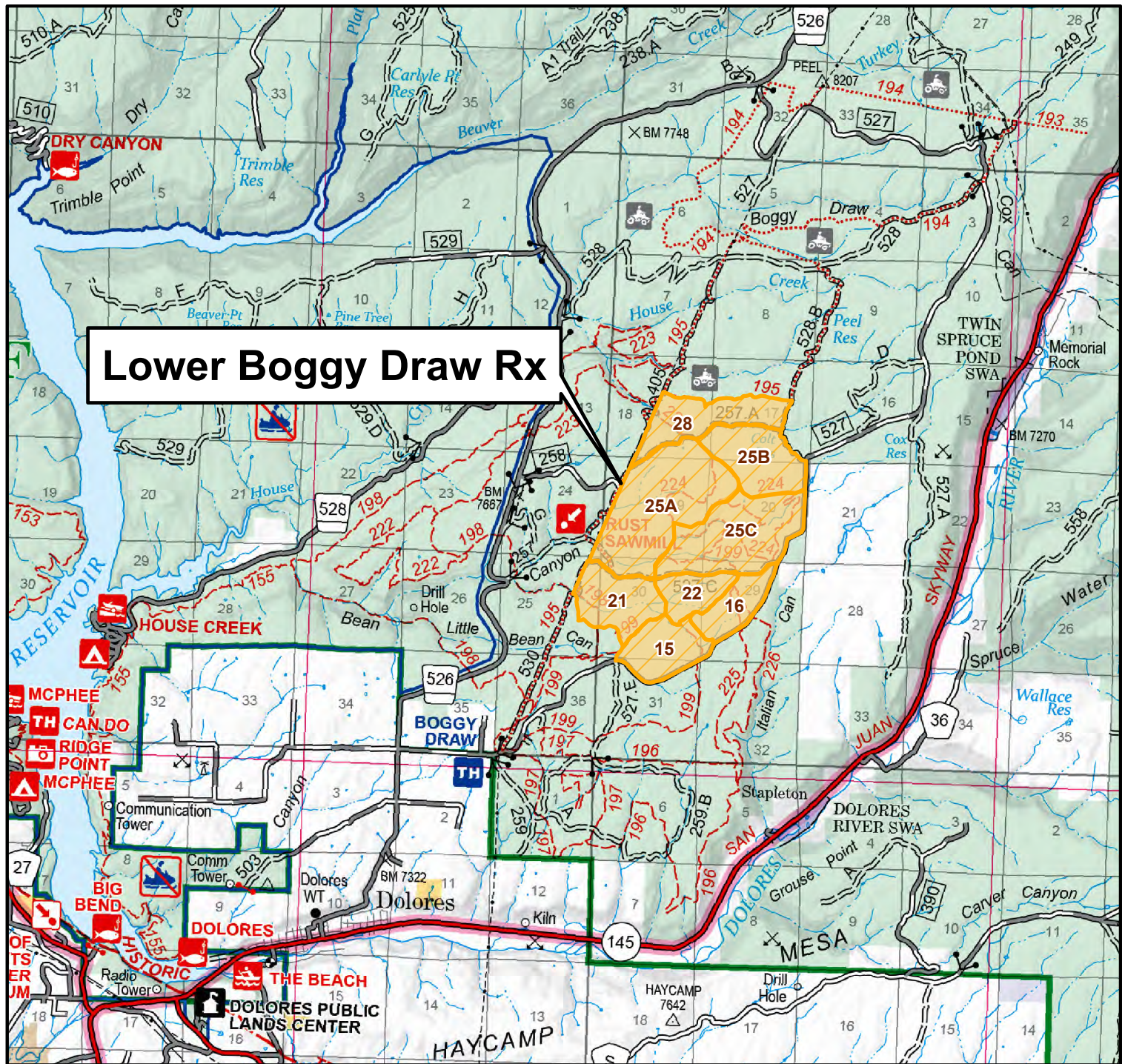
0 0.28 0.55 1.1 Miles

Disclaimer: GIS data and product accuracy may vary. The Forest Service reserves the right to correct, update, modify, or replace GIS products without notification.

Vicinity Map



San Juan National Forest Dolores Ranger District | LOWER BOGGY DRAW PRESCRIBED FIRE



 Rx Unit

Unit #	Acres
15	254
16	188
21	290
22	165

Unit #	Acres
25A	706
25B	328
25C	543
28	311



0 0.45 0.9 1.8 2.7 3.6 Miles

Map Date: 3/12/2025